

Once upon a time, a young monster named Marvellous Marvin lived in a land filled with unique individuals and obstacles.

Life had not always been easy for Marvin, as he had grown up in a care system with complex needs and at times it was a lonely and miserable place.



At times Marvin had feelings which he was unsure of and didn't know how to handle.

He felt disorganised and lashed out but deep within his heart, Marvin carried the SEED of hope - where he longed for a place where he could genuinely belong, be loved, flourish, and grow.



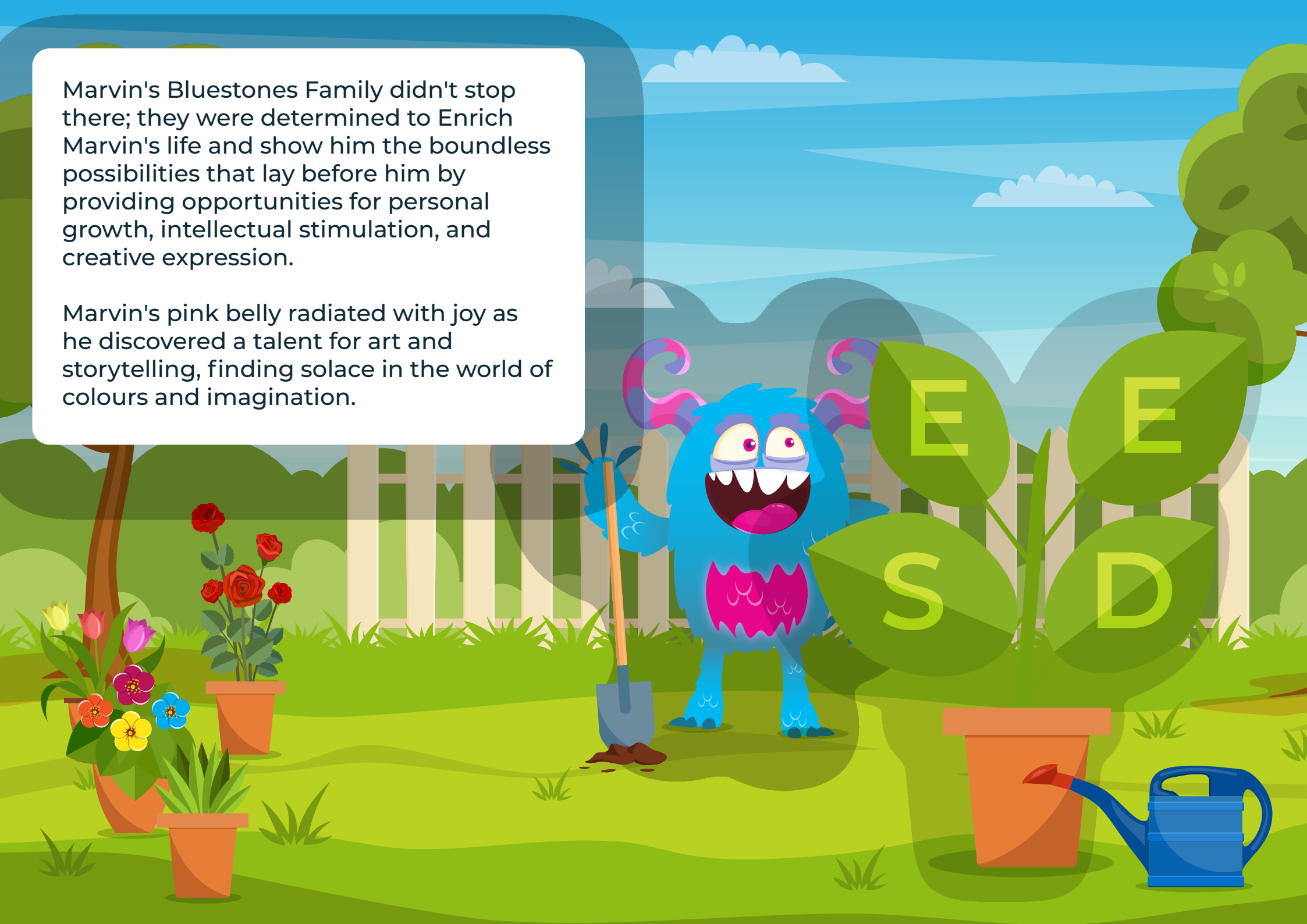
Marvin's journey of hope began when he was introduced to Bluestones Medical Complex Care.



He was greeted by a team of caring individuals who immediately saw beyond his differences, and with open arms and warm smiles, they welcomed Marvin into their Marvel Family.

Marvin's Bluestones Family didn't stop there; they were determined to Enrich Marvin's life and show him the boundless possibilities that lay before him by providing opportunities for personal growth, intellectual stimulation, and creative expression.

Marvin's pink belly radiated with joy as he discovered a talent for art and storytelling, finding solace in the world of colours and imagination.



Stability and Safety were not just words Marvin's new family said; they were foundations upon which Marvin's new world would be built through Bluestones Medical Complex Cares' Family First feel.



Marvin's dedicated new family put lots of time into making Marvin's house feel like a home and put safety procedures into place, ensuring that Marvin's physical and emotional well-being were well protected. Marvin felt a sense of security he had never experienced before and could finally believe in his potential.



As Marvin settled into his new home, he discovered the next stage of Bluestones Medical Complex Care SEED Care Model: Empower and Enrich.

The team at Bluestones recognised Marvin's unique journey and the challenges he had faced. They celebrated his autonomy, respected his boundaries, and actively involved him in decision-making. Marvin's voice started to really get heard, and he began to understand the power of his own choices, and his confidence grew and grew



Education and Enhancement played a significant role in Marvin's SEED journey too. His Complex Care family understood that knowledge was a key that could unlock countless doors.

They provided Marvin access to unique educational programmes, workshops, and materials that nurtured his interests and needs. Marvin's eyes sparkled with curiosity as he learned about the new world around him, expanding his horizons and gaining confidence in his abilities.





Marvin reached the final stages of his SEED care model: Develop and Discharge.

His Bluestones family worked closely with him, crafting personalised plans to support his journey towards independence. They set achievable goals together, offering guidance and interventions when needed. Marvin's growth and progress were carefully monitored, and each milestone was celebrated with cheers and applause.



On the day Marvin was to be discharged, Marvin stood tall, his vibrant blue fur glistening in the sunlight and his pink belly shining proudly. His Complex Care family surrounded him, their faces filled with admiration and warmth.

With heartfelt goodbyes, Marvin stepped out into the world's vastness, carrying the seeds of Stability, Empowerment, Education and Development within him. The lessons he had learned and the love he had received would forever guide his path.





Marvin's SEED journey had transformed him into a beacon of resilience, strength, knowledge, and compassion.

And as he embarked on his new adventures, he knew deep in his heart that he was destined for greatness, spreading his marvellous light wherever he went.